

JAKBOENO

UNDERWATER HUNTING & FREE DIVING EQUIPMENTS



www.jakboeno.com

WETSUITS

DELTA

The new member of JakBoeno wetsuits the Delta is made of Yamamoto39 Limestone Neoprene.



The camouflage pattern, with its 3D design and blue gray color scheme, provides great disguise advantages in the majority of underwater environments.

Neoprene

The limestone Yamamoto® 100% Chloropren Rubber with its density, perfect insulation and high stretching factor, equips Delta, with extra durability under pressure, additional insulation and comfort compared to other rubber foam of same thickness.

Jersey

Woven of microfiber polyester and Invista Lycra®, jersey fabric used in the making of Delta provides great elastic stretch in every direction and holds minimum amount of water with its silky texture. Jakboeno® original design is printed on the raw fabric with UV resistant colors of 4-5 fastness, preventing the colors from fading.

Chest Pad

The new rubber chest pad is reinforced with 3mm neoprene, and with its flexibility and pieced assortment provides gun-cocking comfort. The pad is heat processed and then sown on the suit.

Knees

They are protected with a Supratex jersey, and with its flexibility provides comfort. Pads are blind stitched on the jersey.

Available in

1,50mm, 3mm, 5mm and 7mm thicknesses

Man Sizes S / M / L / XL / 2XL / 3xL / 4XL

Woman Sizes XS / S / M / L / XL

Long John pants on request



WETSUITS

THERMOSKIN KARMA

The new JakBoeno Thermoskin wetsuits are made of Yamamoto39 Limestone Neoprene.



The camouflage pattern, with its divided design and red green color scheme, provides great disguise advantages in the majority of underwater environments.

Neoprene

The limestone Yamamoto® 100% Chloropren Rubber with its density, perfect insulation and high stretching factor, equips Thermoskin, with extra durability under pressure, additional insulation and comfort compared to other rubber foam of same thickness.

Jersey

Woven of microfiber polyester and Invista Lycra®, jersey fabric used in the making of Thermoskin Karma, provides great elastic stretch in every direction and holds minimum amount of water with its silky texture. Jakboeno® original design is printed on the raw fabric with UV resistant colors of 4-5 fastness, preventing the colors from fading.

Chest Pad

The new rubber chest pad is reinforced with 3mm neoprene, and with its flexibility and pieced assortment provides gun-cocking comfort. The pad is heat processed and then sown on the suit.

Elbows and Knees

They are protected with a new rubber pad, and with its flexibility and pieced assortment provides comfort. Pads are heat processed on the jersey.

Available in

1,50mm, 3mm, 5mm and 7mm thicknesses

Man Sizes S / M / L / XL / 2XL / 3xL / 4XL

Woman Sizes XS / S / M / L / XL

Long John pants on request



WETSUITS

THERMOSKIN DARK

The new JakBoeno Thermoskin wetsuits are made of Yamamoto39 Limestone Neoprene.



The camouflage pattern, with its divided design and gray black color scheme, provides great disguise advantages in the majority of underwater environments.

Neoprene

The limestone Yamamoto® 100% Chloropren Rubber with its density, perfect insulation and high stretching factor, equips Thermoskin, with extra durability under pressure, additional insulation and comfort compared to other rubber foam of same thickness.

Jersey

Woven of microfiber polyester and Invista Lycra®, jersey fabric used in the making of Thermoskin Dark provides great elastic stretch in every direction and holds minimum amount of water with its silky texture. Jakboeno® original design is printed on the raw fabric with UV resistant colors of 4-5 fastness, preventing the colors from fading.

Chest Pad

The new rubber chest pad is reinforced with 3mm neoprene, and with its flexibility and pieced assortment provides gun-cocking comfort. The pad is heat processed and then sown on the suit.

Elbows and Knees

They are protected with a new rubber pad, and with its flexibility and pieced assortment provides comfort. Pads are heat processed on the jersey.

Available in

1,50mm, 3mm, 5mm, 7mm and 9mm thicknesses

Man Sizes S / M / L / XL / 2XL / 3xL / 4XL

Woman Sizes XS / S / M / L / XL

Long John pants on request



WETSUITS

QUARTZ RETRO

The Quartz Retro camouflage pattern, with its divided design and blue color scheme, provides great disguise advantages in the majority of open water environments.



Neoprene

The Jako® 100% Chloropren Rubber with its density, perfect insulation and high stretching factor, equips Quartz Ocean with extra durability under pressure, additional insulation and comfort compared to other rubber foam of same thickness.

Jersey

Woven of microfiber polyester and Invista Lycra®, jersey fabric used in the making of Quartz Ocean provides great elastic stretch in every direction and holds minimum amount of water with its silky texture. Jakboeno® original design is printed on the raw fabric with UV resistant colors of 4-5 fastness, preventing the colors from fading.

Chest Pad

The new rubber chest pad is reinforced with 3mm neoprene, and with its flexibility and pieced assortment provides gun-cocking comfort. The pad is heat processed and then sown on the suit.

Elbows and Knees

They are protected with a new rubber pad, and with its flexibility and pieced assortment provides comfort. Pads are heat processed on the jersey.

Available in

1,50mm, 3mm, 5mm and 7mm thicknesses

Man Sizes S / M / L / XL / 2XL / 3xL / 4XL

Woman Sizes XS / S / M / L / XL

Long John pants on request

WETSUITS

QUARTZ OCEAN

The Quartz Ocean camouflage pattern, with its divided design and blue color scheme, provides great disguise advantages in the majority of open water environments.



Neoprene

The Jako® 100% Chloropren Rubber with its density, perfect insulation and high stretching factor, equips Quartz Ocean with extra durability under pressure, additional insulation and comfort compared to other rubber foam of same thickness.

Jersey

Woven of microfiber polyester and Invista Lycra®, jersey fabric used in the making of Quartz Ocean provides great elastic stretch in every direction and holds minimum amount of water with its silky texture. Jakboeno® original design is printed on the raw fabric with UV resistant colors of 4-5 fastness, preventing the colors from fading.

Chest Pad

The new rubber chest pad is reinforced with 3mm neoprene, and with its flexibility and pieced assortment provides gun-cocking comfort. The pad is heat processed and then sown on the suit.

Elbows and Knees

They are protected with a new rubber pad, and with its flexibility and pieced assortment provides comfort. Pads are heat processed on the jersey.

Available in

1,50mm, 3mm, 5mm and 7mm thicknesses

Man Sizes S / M / L / XL / 2XL / 3xL / 4XL

Woman Sizes XS / S / M / L / XL

Long John pants on request

WETSUITS

QUARTZ BLACK

Quartz Black brings back the classic black look to the wet suit for the traditional hunters.



Neoprene

100% Chloropren Rubber with its density, perfect insulation and high stretching factor, equips Quartz Black with extra durability under pressure, additional insulation and comfort compared to other rubber foam of same thickness.

Jersey Fabric

Woven of microfiber polyester and Invista Lycra®, jersey fabric used in the making of Quartz Black provides great elastic stretch in every direction and holds minimum amount of water with its silky texture. Jakboeno® original design is printed on the raw fabric with UV resistant colors of 4-5 fastness, preventing the colors from fading and the fabric from turning white when stretched.

Chest Pad The new rubber chest pad is reinforced with 3mm neoprene, and with its flexibility and pieced assortment provides gun-cocking comfort. The pad is heat processed and then sown on the suit.

Elbows and Knees

They are protected with a new rubber pad, and with its flexibility and pieced assortment provides comfort. Pads are heat processed on the jersey.

Available in

1,50mm, 3mm, 5mm, 7mm and 9mm thicknesses

Man Sizes S / M / L / XL / 2XL / 3xL / 4XL

Woman Sizes XS / S / M / L / XL

Long John pants on request

SIZE CHARTS

MEN SIZE

Size		Height (Cm)	Weight (Kg)
XS	1	155 - 162	55 - 60
S	2	162 - 169	61 - 68
M	3	170 - 178	69 - 78
L	4	179 - 185	79 - 87
XL	5	186 - 190	88 - 96
XXL	6	191 - 195	97 - 110
XXXL	7	196 - 200	110 - 120

WOMEN SIZE

Size		Height (Cm)	Weight (Kg)
XS	1	150 - 158	43 - 50
S	2	157 - 163	48 - 54
M	3	160 - 168	54 - 63
L	4	165 - 172	62 - 70
XL	5	170 - 183	69 - 75

GLOVES

All gloves are made of 3mm neoprene laminated with microfibre polyester jersey on the exterior and in the interior.

The palm is strengthened with double lined supratex polyester and polyurethane prints.

Available in:

S / M / L and XL sizes



Thermoskin Dark



Thermoskin karma



Quartz Brown



Quartz Green



SOCKS

All socks are made of 3mm neoprene laminated with microfibre polyester jersey on the exterior and opencell in the interior. The sole is strengthened with double lined supratex polyester jersey and polyurethane dots.

Available in:

1,50mm, 3mm, 5mm and 7mm thicknesses
S / M / L / XL and 2XL sizes



Quartz Ocean



Quartz Brown



Quartz Green



Quartz Black

WINDBRAKERS



The 3mm neoprene, hooded windbreaker is perfect not only for after underwater hunting in winter but also for those who fish or spend time on the sea in cold, windy and rainy weather.

The loose and comfortable fit narrows down on wrists to prevent heat loss.

Comes in 6 different colors and in M, L and XL sizes.



WEIGHT VESTS

The compact weight vest is made of polyester jersey 4mm neopren and lead weights designed to fit perfectly to the anatomy of the back.

In order to compensate for the buoyancy of the neopren material, the vest has been designed to weigh 4740gr.

The net sinking weight of the vest is 4500gr.

The ANM adjustable double side squeeze buckle allows the vest to be fitted as desired.

The polyester braded strap with it's buckle can be fixed to the weight belt to prevent the upward movement of the vest during diving.

Quartz Brown, Quartz Green and Quartz Black colours are available in S-M and L-XL sizes.

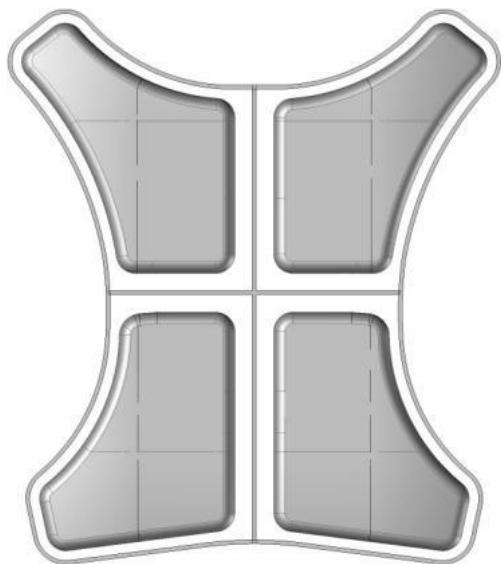


QUARTZ BROWN



QUARTZ GREEN

WEIGHT VESTS



BELT WEIGHT

PRO WEIGHTS



Pro 750



Pro 1500



Pro 2250

Pro series diving weights are coated with epdm rubber which not only enables a professional hunting experience by minimizing noise but also makes spearfishing into an eco-friendly sport by protecting the nature from toxic lead.

The weights have hollows through which the belt can be passed.

Pro series are hydrodynamically shaped into 750 grams, 1500 grams and 2250 grams, in same widths and height but different lengths to allow comfortable use.



CLASSIC WEIGHTS

Classic diving weights are coated with epdm rubber which not only enables a professional hunting experience by minimizing noise but also makes spearfishing into an eco-friendly sport by protecting the nature from toxic lead.

Classic series are hydrodynamically shaped into same width and height to allow comfortable use and molded in standard form of 1000 and 2000 grams. Their thin and hydrodynamic shape is ideal for low weight users and deep-diving.



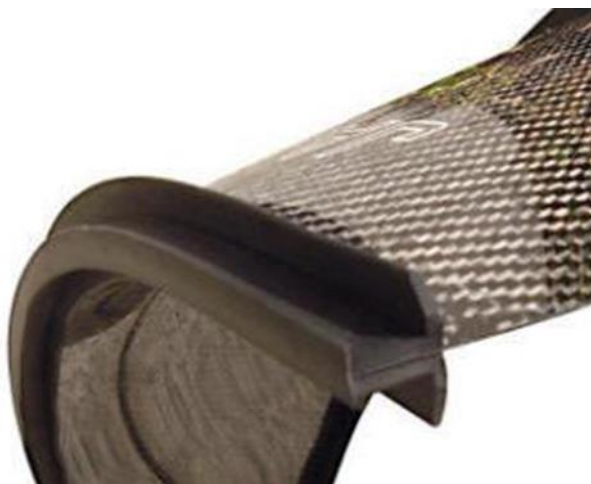
Classic 1000



Classic 2000



FIN BLADES



JAKBOENO fin blades are produced using carbon fibers in three different thicknesses (soft, medium and hard). All blades are hand crafted.

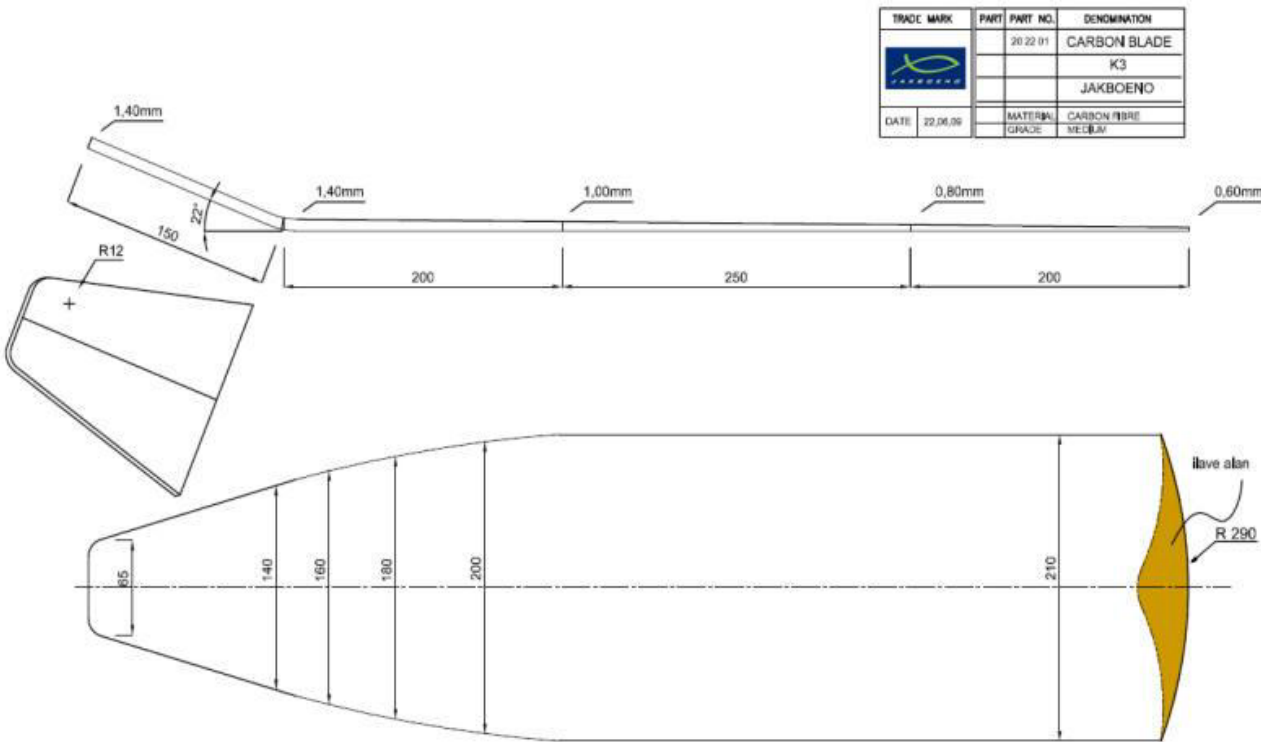
The patterns and writings are off-set transfer printed to specific fabrics first; the fabrics are then covered with epoxy resine in steel molds into fin blades.

This process enables the patterns to be considerably resistant to abrassive underwater environment.

The thickness of the fin decreases from 1.40 mm to 0.60 at the tip. Unlike the usual layer peeling method of fin thinning, this gradient in JAKBOENO fins is obtained in the molding process making the fins again more durable.

The fin blades are manufactured to attach to the foot pocket at the ideal ergonomy of 22o The rubber side bands are inverse-T shaped to allow easy fitting to almost all foot pockets.

The convex form of the tips increase the surface area of the fin by 8 %.



FIN BLADES

CARBON FIBRE BLADES

Carbon fiber fin blades are manufactured with 3K Twile weaved carbon fabric. Carbon fiber blades are ideal for underwater as they are characterized by their optimum efficiency regarding lightness and their high yield of performance



GLASS FIBRE BLADES

Glass Fiber is produced by forming 0,005-0,020 mm threads from glass molten at

1600 °C Its ability to perfectly combine with epoxy resin along with its suitable price makes glass fiber a commonly preferred material for fin blade manufacturing.



MASK & SNORKELS

MANTIS PRO

With its super low volume and excellent wide field of vision ,Mantis Pro is especially designed for free divers and spearfishers.

Black silicone double feather-edge facial skirt and mask strap.

Tempered glass. The face seal is designed for general divers.

Unique and patented push-button buckles allow easy, quick strap adjustment.

Flexible buckle system attachment swivels with facial movements and absorbs shock, preventing buckle breakage when mask is bumped.

This mask uses a new anti-fog technology wich prevents recurring fogging found in many masks in the market. It's unlike other anti-fog technologies wich uses a layer of anti-fog substance on th inside of the lens. Over time, this layer wears off and the mask start fogging. The technology used in this mask will ensure that with repeated use, the mask will fog less and less. Mask fogging will become a problem of the past.



Low profile and very ergonomic J- type snorkel.

Black silicone and comfort mouthpiece for free diving and spearfishing purpose.

Available color: All Black

ALUMINIUM RAILGUNS

SMART BLACK

Smart is designed for beginners and intermediate spear fishers.



Duraluminium railed barrel, enable an appropriate shooting performance on long range, prevents bending of the barrel also with power sandows. Round notch spears are specially designed to prevent worning-out of the rope and the fishline.



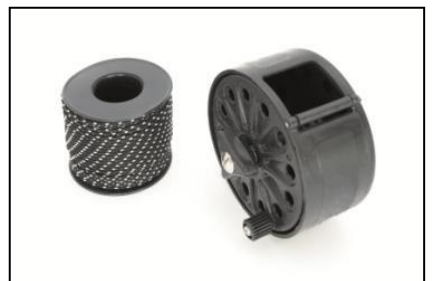
TECHNICAL SPECIFICATIONS

Closed muzzle, Composite duraluminum railed 28mm Ø barrel

5 stage water proof stoppers in the barrel. Ergonomic handle made of 6.6 nylon reinforced with fiberglass. Layered with a raw material to prevent slipping, Open head made of 6.6 nylon, reinforced with fiberglass.

Double component 20 mm Ø screwable sandows Articulated wishbone to work easily on the axis of head, spear and mechanism. Two piece, silent trigger mechanism suitable for different rubber thickness. 6.50 mm AISI 630 (17-4ph) stainless steel round notch spear, 1.35 mm challenge cordage fishline and clips, Shock absorber rubber for the rope and fishline, Reel mounting apparatus

LENGTH 45cm, 60cm, 75cm, 82cm, 90cm, 100cm, 110cm, 120cm, 130cm



ALUMINIUM RAILGUNS

SMART OPEN BLACK

Smart Open is designed for advanced users.



Duraluminium railed barrel, enable an appropriate shooting performance on long range, prevents bending of the barrel also with power sandows. Shark fin spears are specially designed to prevent worning-out of the rope and the fishline.



TECHNICAL SPECIFICATIONS

Open muzzle, composite duraluminum railed 28mm Ø barrel 5 stage water proof stoppers in the barrel. Ergonomic handle made of 6.6 nylon reinforced with fiberglass. Layered with a raw material to prevent slipping, open head made of 6.6 nylon, reinforced with fiberglass. Double component 20 mm Ø round sandows, corde wishbone. Two piece, silent triger mechanism suitable for different rubber thickness. 6.50 mm AISI 630 (17-4ph) stainless steel shark fin spear, 1.35 mm challenge cordage fishline and clips, reel mounting apparatus

LENGTH

82cm, 90cm, 100cm, 110cm, 120cm, 130cm

SMART CAMU GREEN & SMART OPEN CAMU BROWN

Beautiful camouflage for two different environment. Very resistant layers to shocks and scratches.



WOODEN SPEARGUNS

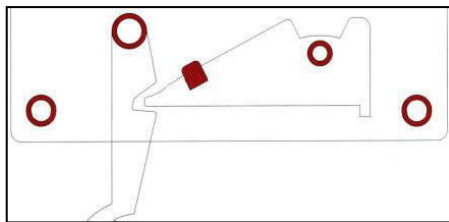
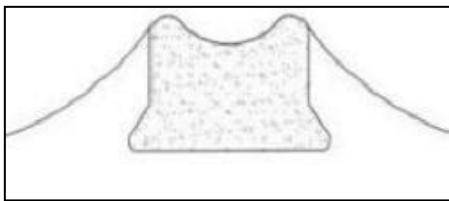
ZEN

The Zen series is created using fine quality Myanmar Teak timber not kiln dried in order to preserve the natural oil of the trees and thus enable durability.



The triple laminated timber, after a certain time period, is hand-crafted into the spear gun. The shaft guide is strengthened and made slick with epoxy resin which provides protection against possible damage. The three magnets embedded in the shaft guides of the Zen Series speargun keep the spear in place while the gun is cocked in water, gaining time and advantage for the hunter and

minimize the ballistic errors, enabling accuracy of 10-14 cm groupments from 3-4 meters distance.



The single circular sandowed models come with a standard 19.00 mm sandow. In double circular sandowed models, 15.50 mm and 17.50 mm sandows are available. All sandows have traditional amber and black color choices. The wishbones are crafted of resin-covered, antistatic, unflexible and long-enduring 2.00 mm jacard cords. Shaft cords are made of threaded polyester much more durable than the standard monofilament nylon cords.

The two pieced trigger mechanism can be used with standard spears. The silicon pin on the hammer and Delrin® O rings enable the trigger mechanism to operate in absolute silence. All parts of metal are made of Polished Ni-Cr AISI 316. Loctite® industrial adherent is used in screwing. The inner form of the reel made of Delrin® and polyethylene is shaped especially not to damage the reel cord. The reel mechanism is designed to release the cord when it is subjected to a force greater than 2.00 kilograms minimizing the risk of losing the spear gun to the rapid movements of the strong prey. The handle is covered with nonslip material to allow comfortable grip in different positions. With their original design and buoyancy close to neutral, the Zen Series wooden spearguns ensure a great underwater hunting experience.

Zen90, Zen90D, Zen100, Zen100D and Zen110D are brought to the customs ready to be used with shark fin shafts, circular sandows, reel and reel cord, two spare wishbone cords, three sleeves, a spare shaft cord and a shaft remover.

WOODEN SPEARGUNS

ZEN



SCREWABLE SANDOWS

The outer layer of the sandows are colored black to increase protection from UV while the natural latex inner core produces a better performance.

The couplings at the tips of the sandows bear standard screw thread size making the sandows suitable for almost all spearguns.

Screwable Sandows are sold with a specially manufactured wrench to enable the customer to easily screw and unscrew the sandow when needed.

The couplings are colored in order to make the improperly screwed sandows easily noticeable by the user.

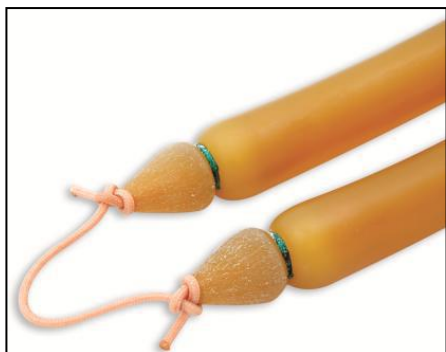


SCREWABLE SANDOWS MEASURES

DIAMETER (mm.)	LENGTH (cm.)	DIAMETER (mm.)	LENGTH (cm.)	DIAMETER (mm.)	LENGTH (cm.)
	14,00		14,00		14
	16,00		16,00		16
	18,00		18,00		18
	20,00		20,00		20
	22,00		22,00		22
	24,00		24,00		24
15,50	26,00	17,50	26,00	19,00	26
	28,00		28,00		28
	30,00		30,00		30
	32,00		32,00		32
	34,00		34,00		34
Circular	36,00	Circular	36,00	Circular	50
	38,00		52,00		54
	48,00		56,00		58
	52,00		60,00		62
	56,00		64,00		66
	60,00				



CIRCULAR SANDOWS WITH CORD WISHBONE



The **"NEWFORCE"** series natural latex sandows are manufactured using Dip Processing. The multi-layered rubber produced enables the sandow to be more resistant to UV light and more protected from the environment.

Dip Processing also enhances the performance of the sandow significantly; the newforce sandows are 18 % stronger and 150 miliseconds faster than the regular sandows.

The sandows with resine-covered, antistatic, unflexible and long-enduring 2.00 mm jacard cord wishbones are designed especially for the shark fin shaft.

To enable the easy replacement of the cord, the knot eye system has been used.

The tips of the sandow have been shaped hidrodynamicallly.



The natural amber latex sandows are sold in opaque packs in order to increase durability by protecting the product from light.

The Bowed Sandows with Cord wishbones are produced in three different widths and four different lenghts for each width.

15.50 mm available in 48, 50, 52, 54, 56, 58, 60 and 62 cm

17.50 mm available in 50, 52, 54, 56, 58, 60, 62 and 64 cm

19.00 mm available in 52, 54, 56, 58, 60, 62, 64 and 66 cm

CIRCULAR SANDOWS WITH METAL WISHBONE



Sandows with jointed metal wishbone in standard sizes are designed especially for the Round notch shaft. In order to ease the montage process, one tip of the sandow is bowed while the other tip is left loose with the bowing cord on it.

The tips of the sandows have been shaped hidrodynamicallly.

The outer layer of the sandows are colored black to increase protection from

UV while the natural latex inner core produces a better performance.

15.50 mm available in 48, 50, 52, 54, 56, 58, 60, and 62 cm

17.50 mm available in 50, 52, 54, 56, 58, 60, 62 and 64 cm

19.00 mm available in 52, 54, 56, 58, 60, 62, 64 and 66 cm

SHAFTS

The shafts, manufactured of Sandvik AISI 630 (17-4ph) inox material, are available in 6.50mm and 7.00mm as shark fin and round notch.



ROUND NOTCH SPEAR MEASUREMENTS

LENGTH (cm.)	6,50 mm
75	✓
90	✓
115	✓
125	✓
130	✓
140	✓
150	✓
160	✓

SHARK FIN SPEAR MEASUREMENTS

LENGTH (cm.)	6,50 mm	7,00 mm
130	✓	✓
140	✓	✓
150	✓	✓
160	✓	✓

WISHBONES

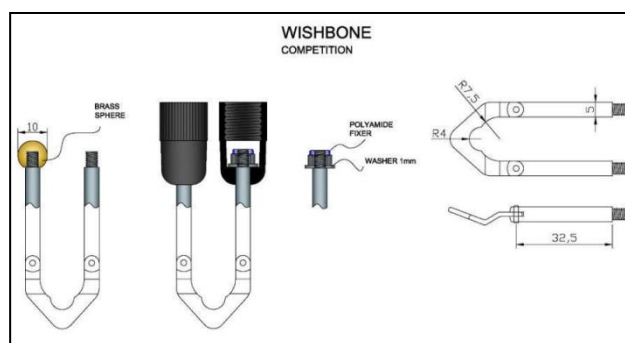
METAL COMPETITION WISHBONES



Articulated short wishbones are suitable for competition. Wide base and short sleeves help the competitor to get the maximum performance of the sandows and gain time.

They are made of 5mm NiCr AISI 301 stainless material and are compatible with all standart screwable sandows. Articulated short wishbones with spheres are suitable for round notch spears.

They are made of 5mm, NiCr AISI 301 stainless material with 8mm diameter brass spheres for 15,50mm sandows and 10mm diameter brass spheres for 19,00mm sandows, ready to use with waxed cords.



FRENCH WISHBONES

French wishbones are made of 4 mm NiCr AISI 316 stainless material and are suitable with all standart screwable sandows.

Metal wishbones are made for round notch spears, of 4 mm, NiCr AISI 316 stainless material with 8 mm diameter brass spheres for 15.50 mm sandows and 10mm diameter brass spheres for 19 mm sandows, ready to use with waxed cords.



CORD WISHBONES



Cord wishbones are made for shark fin spears, of 2 mm, abrasion and elongation resistant, antistatic, harness cords braided of polyester yarns with 8 mm diameter delrin spheres for 15.50 mm sandows and 10mm diameter delrin spheres for 19 mm sandows, ready to use with two loops and waxed cords.



WISHBONE CORD

The wishbone cord is made of 2 mm, abrasion and elongation resistant, antistatic, harness

cord braided of Polyester yarns. Unlike the loose braided cords, this wishbone cord does not tighten more than it should, allowing it to be changed easily and quickly when needed.

Sold in 1 meter packs.



REEL CORD

The 1.70 mm reel cord is braid of beige colored polyester yarns. The color makes the cord visible and easily located during hunting.

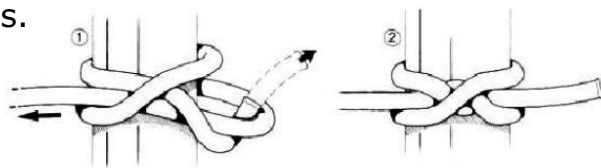
Sold in 50 meter coils.



CONSTRUCTOR CORD

The constrictor cord is braid loosely from polyester yarns in 1.20 mm diameter and waxed to allow the constrictor know to be as tight and strong as possible.

Sold in 2 meter packs.



SHAFT CORD

Significantly more abrasion resistant than standart monofilament polyamide cords, the 6 meters long, shaft cord with built in polyester braiding is sold with three sleeves.



ACCESSORIES



SPEAR REMOVER

The shaft remover is made of 5 mm Cr-Ni AIDI 326 stainless material. It can be carried comfortably in the sleeves of the wet suit.

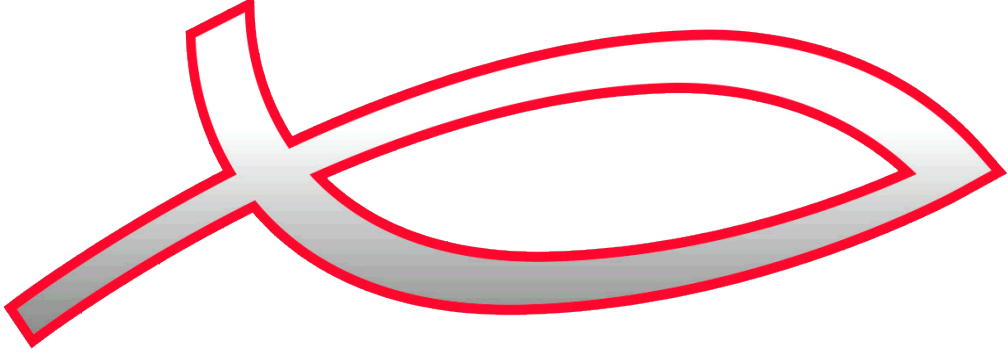
The removers ergonomic design enable easy removal of the shaft by fitting into the palm.



FISH STRINGER

The carabiner and the shaft of the fish stringers are made of, 6.50 mm Cr-Ni AISI 316 stainless steel. While fixing the first weight on the weight belt, the buckle also allow





JAKBOENO

Ünipren Neopren Ürünleri San. Ve Tic. Ltd. Şti.

İstinye Mah. Akıncı Sokak. No:28 D:1
34460 Sarıyer-İstanbul

Telefon: +90 212 284 94 60

Gsm: +90 533 776 41 42

Fax: +90 212 284 94 25

info@unipren.com.tr

www.unipren.com.tr

www.jakboeno.com.tr